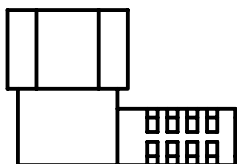


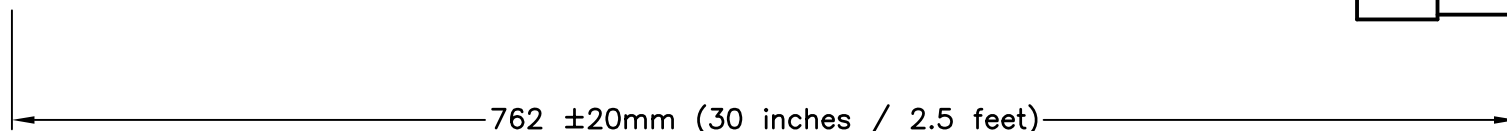
APPROVALS	CSA <input checked="" type="checkbox"/> UL <input checked="" type="checkbox"/>
CERTIFICATIONS	ROHS <input checked="" type="checkbox"/>
STANDARDS	IEC 60320 <input checked="" type="checkbox"/>

ALL DIMENSIONS ARE IN MILLIMETERS

IEC 60320  
C-14, RIGHT ANGLE



IEC 60320  
C-13, STRAIGHT



**SPECIFICATIONS:**

1. OVERALL LENGTH: 762 mm (30 inches / 2.5 feet)
2. CONDUCTORS: 18awg-3c
3. JACKET: SJT(OW), BLACK
4. PLUG: IEC 60320 C14, RIGHT ANGLE, BLACK
5. CONNECTOR: IEC 60320 C13, STRAIGHT, BLACK
6. RATED: 10 AMPERE 250 VOLT
7. PUT-UP: BULK
8. WEIGHT (APPROX): 0.24 LBS / 0.11 Kg
9. MISCELLANEOUS:

**WORLD CORD SETS, INC.**

TEL (860)763-2100  
FAX (860)763-1183



www.WorldCordSets.com  
sales@WorldCordSets.com

TITLE

DETACHABLE CORD SET C14RA C13 2.5FT 10A 250V

THIS DOCUMENT AND THE INFORMATION CONTAINED HEREIN ARE THE PROPRIETARY CONFIDENTIAL PROPERTY OF WORLD CORD SETS. NO USE OR REPRODUCTION IN PART OR WHOLE MAY BE MADE WITHOUT WRITTEN PERMISSION FROM WORLD CORD SETS.

SCALE  
NONE

DATE  
08-30-2012

PART NO.  
14R13-F-030

REV  
-